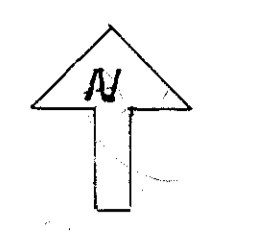


ANNEXED 12-31-98

ORD 98-85 V42 Pg 637 + V42 Pg 677
98-86



1" = 200'

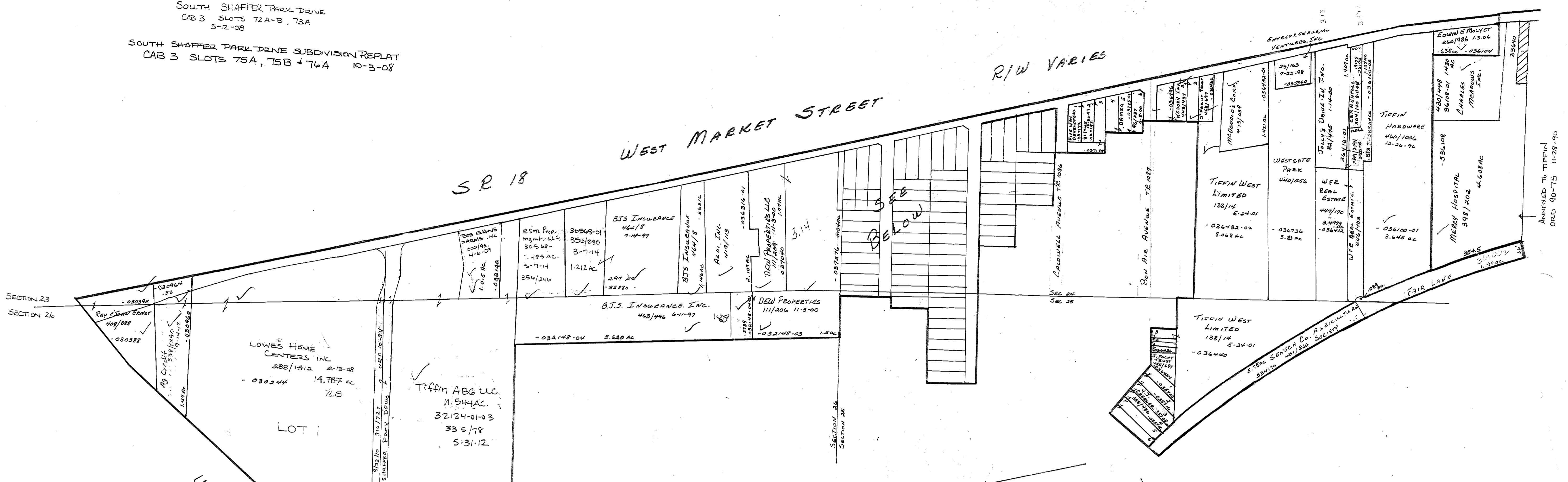
SOUTH SHAFER PARK DRIVE
CAB 3 SLOTS 72A-B, 73A
5-12-08

SOUTH SHAFER PARK DRIVE SUBDIVISION REPLAT
CAB 3 SLOTS 75A, 75B + 76A
10-3-08

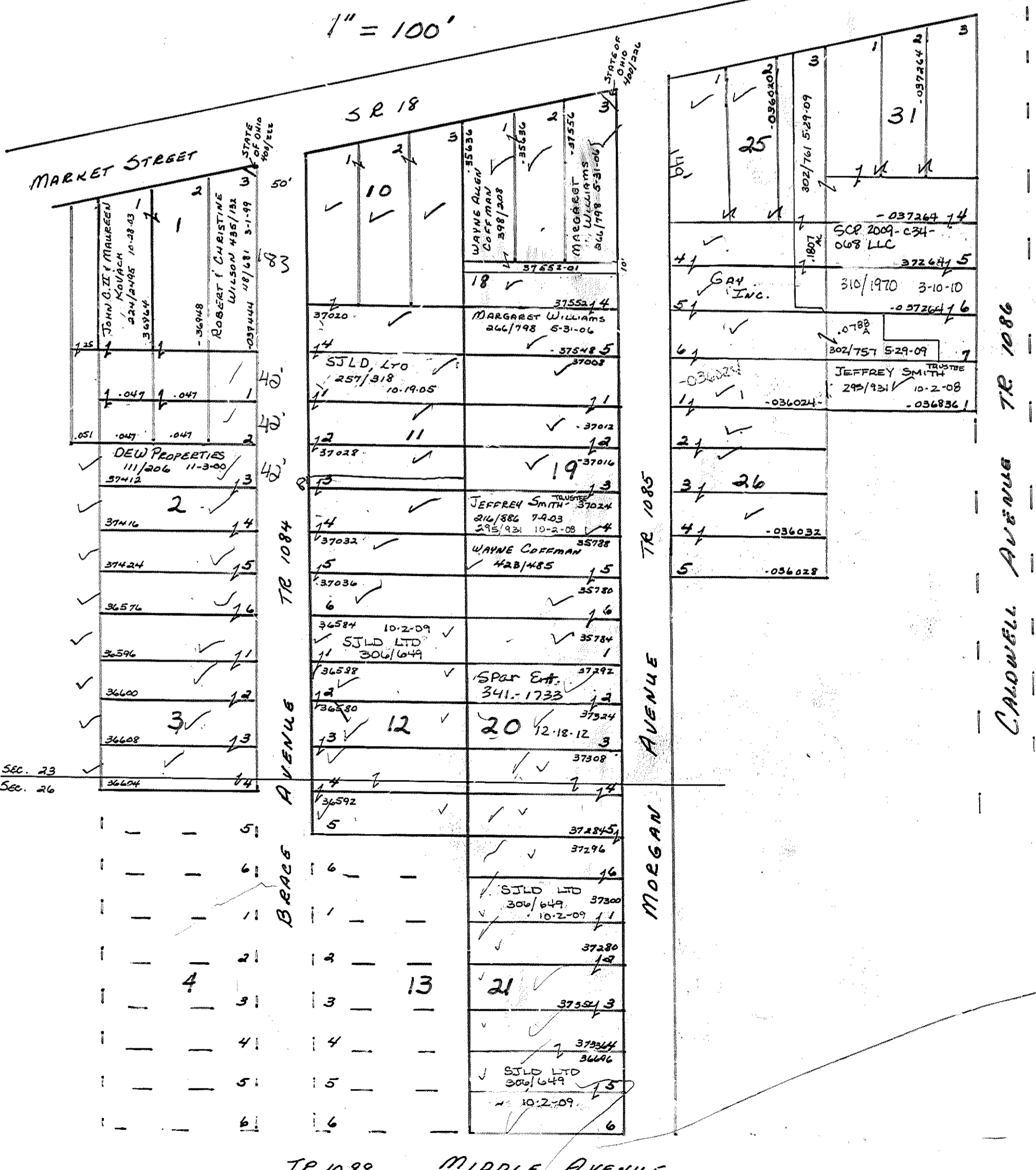
SR 18

WEST MARKET STREET

R/W VARIES



1" = 100'



USP 224

R/W VARIES

TR 1088 MIDDLE AVENUE