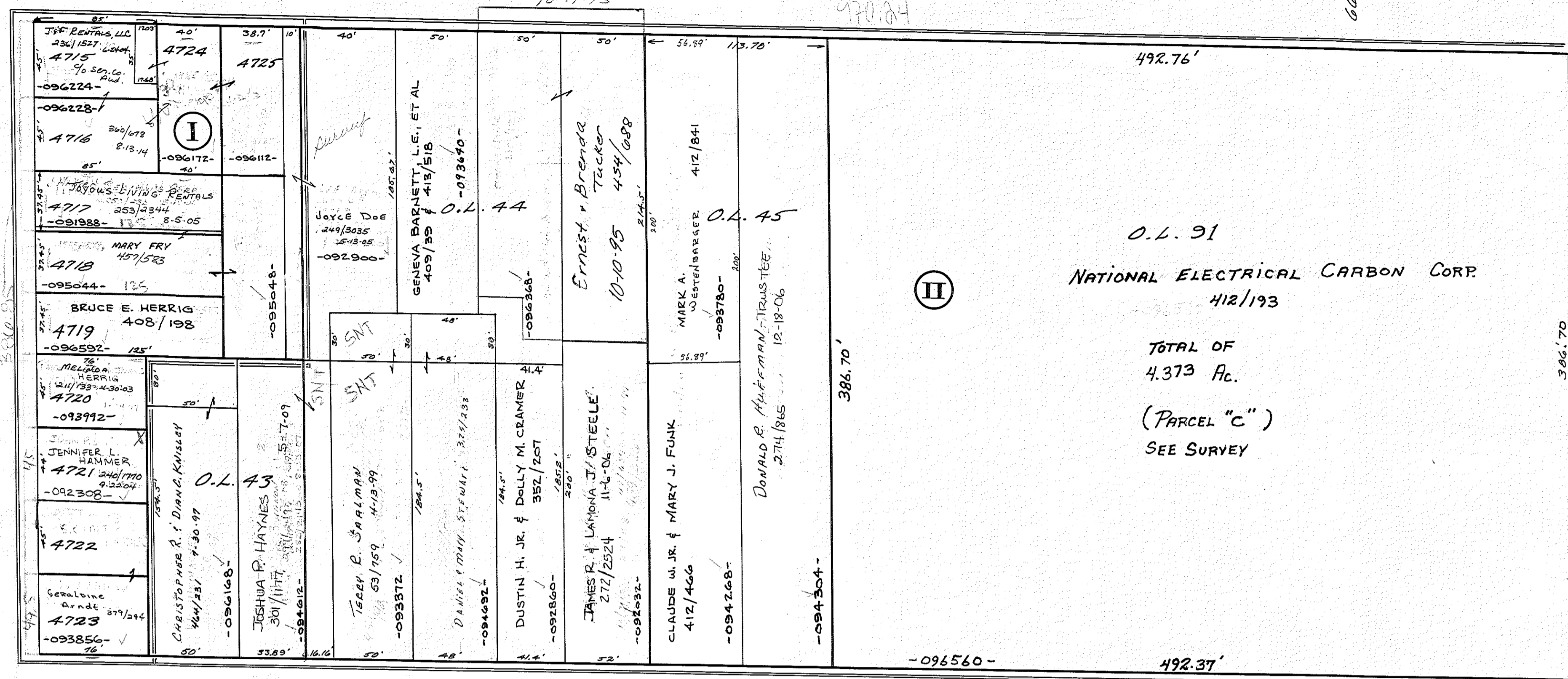
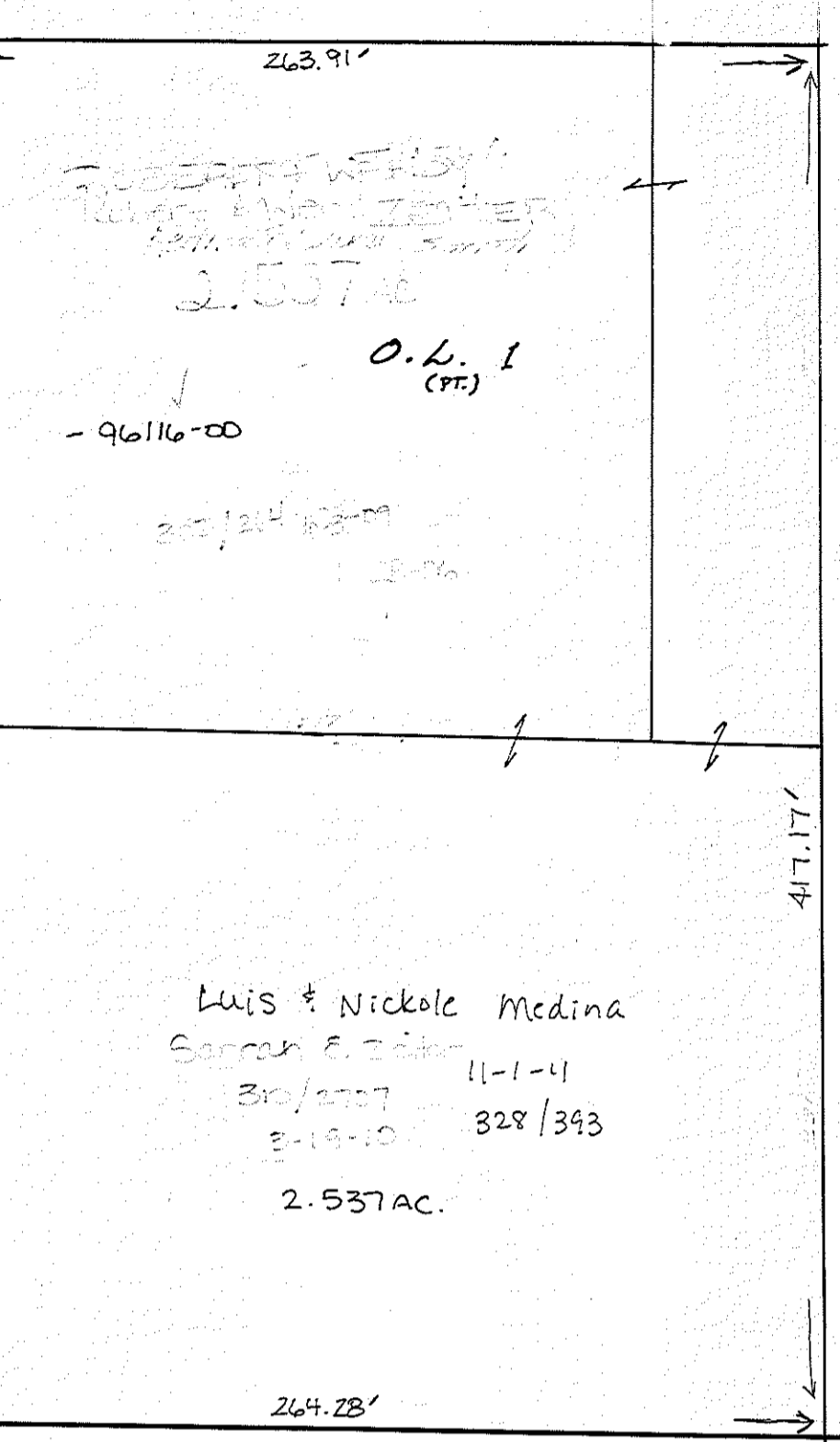


Area between Fremont + McDougal
is about 141' Short
10-11-95
FREMONT STREET

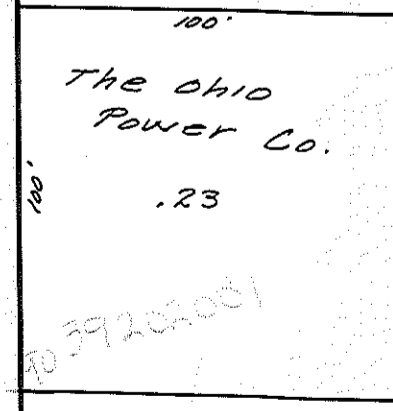
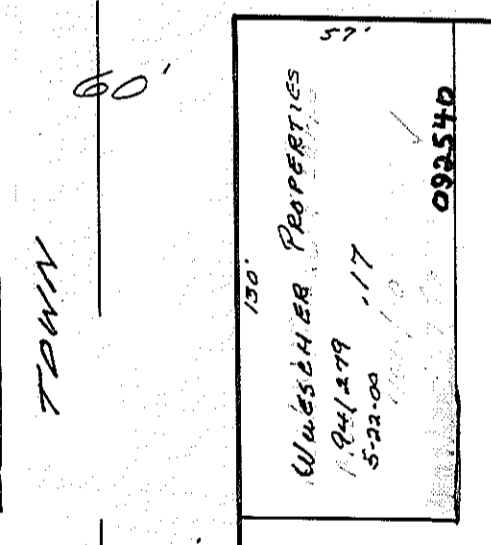


O.L. 91
 NATIONAL ELECTRICAL CARBON CORP.
 412/193
 TOTAL OF
 4.373 AC.
 (PARCEL "C")
 SEE SURVEY



Luis + Nickole Medina
 Sarah E. ...
 11-1-11
 318/2007
 318-10
 328/343
 2.537 AC.

McDOUGAL STREET



NATIONAL ELECTRICAL CARBON CORPORATION
 412/193
 TOTAL OF & PART OF 46.428 AC.
 (PARCEL "B")
 SEE SURVEY

BRUMLEY'S REPLAT OF
 O.L. 83 + O.L. 1402
 J. V. JONES SUB-DIV. I II

— Lot Boundary Line
 — Lot Division Line
 — Separates Different Sub-Divs.

Balance of this tract is shown on page 15.

See Pages # 14 & 15 for balance of this tract.